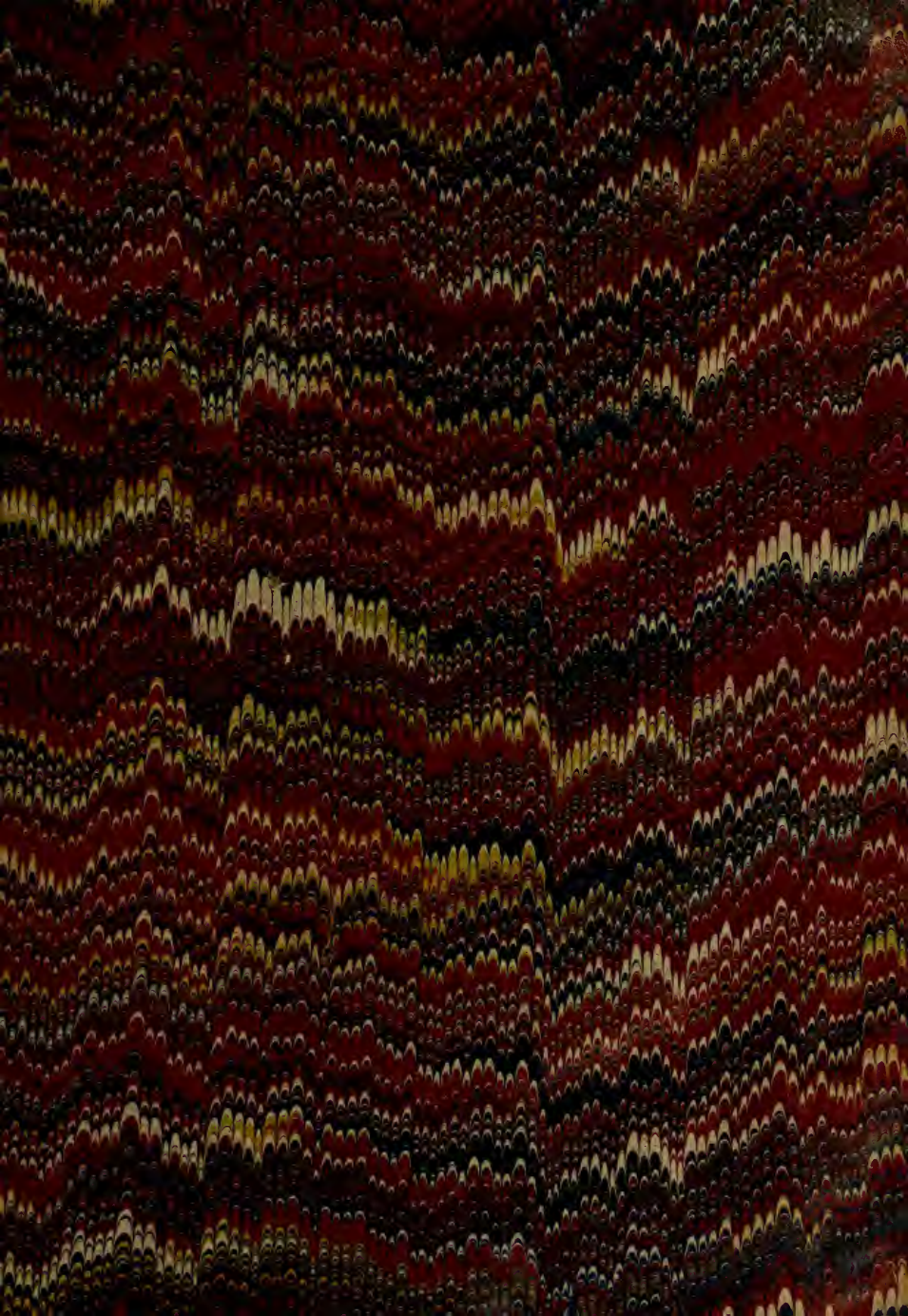


TT

590

.C68

LIBRARY OF CONGRESS.  
Chap. . . . . Copyright No.  
*Shelf T T 590*  
Q 68  
UNITED STATES OF AMERICA.

















THE  
**TAILORS' GUIDE:**

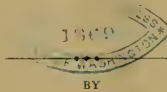
#5399

CONTAINING

SYSTEMS OF DRAUGHTING

FROCK AND SACK COATS, PANTS,  
VESTS AND SHIRTS.

WITH VALUABLE IMPROVEMENTS, WARRANTED SUPERIOR  
TO ANYTHING EVER OFFERED TO THE TRADE.



L. E. COLE,

Practical Cutter for the past 30 years.

Copy Right Secured  
Jan. 18. 1869.

MILWAUKEE:

STARR & SON, BOOK AND JOB PRINTERS, 412 AND 414 EAST WATER STREET.

1868.

3418 ✓

TT 599  
C 68

683544

CA 10-2512

# L. E. COLE'S

## IMPROVED

### SYSTEM OF DRAUGHTING COATS,

BY ACTUAL MEASUREMENT.

---

This system was first published by the proprietor in New York in 1835, and now republished with valuable improvements, such as have suggested themselves to him during a practical experience in using the same during the past thirty years, all of which is warranted to fit all shapes and sizes of men, without any variations in draughting, it being simply a transfer of inches taken on the man and applied on the cloth in draughting, precisely as taken thereby, producing a perfect fitting garment for all shapes and sizes of men, making it in all respects a perfect self varying rule or system of draughting coats; therefore I now offer this to the trade; and all I claim for it is: that you will give it your most critical and careful scrutiny as to its merits and practical utility; and believing that this system is what has long been wanted, by the trade, and that if once adopted will never be abandoned, I most cheerfully submit the same to your inspection and use.

L. E. COLE.

MILWAUKEE, May, 1868.

## ON MEASURING.

Plate 1.—Figs. 1 and 2.

It is of the greatest importance in cutting, to measure with the utmost care and exactness; for if this be done in a loose and careless manner, exactness in delineating will avail but little. The first process towards taking a measure in this system is as follows: Let your customer stand in his natural position, with his hands on his hips, and his coat buttoned; then proceed: First make a mark at O, or where you wish the collar seam; also mark out  $2\frac{1}{2}$  inches on collar-seam, as at K, Fig. 1; next, mark at L, on Fig. 2, where you wish the center of back cye; next, place your tape or square at L and M, and mark on top edge of same on back seam as at B; next, place your square in front of arm—the short arm in front and pointing upward—crowd the same up in front of arm—also the long arm up, as snug under the arm as the customer wishes the coat; while in this position, mark in front of square as at H, opposite the top edge of square; also mark at I, on Fig. 2; then place the square across the back, ranging with I, and mark at C on back seam; next mark at D, the natural waist, and at E full length; next mark out on hip, near where side piece is cut off, say 7 inches from D to I; next, mark at P 2 inches from front of coat at waist; next, extend the line from H to G and to front of breast; at 8 next mark out his line from H to G 4 inches; next mark at P, Fig. 1, and at 8 on breast, and at N or the throat. You are now ready to take your measure.

Commence at O A, Fig. 2, and measure down to B  $5\frac{1}{2}$ , and to C  $8\frac{1}{2}$ , and to D 17, and E 19, and full length skirt 36 inches; next, place your tape measure at H and measure across under arm by I, Fig. 2, to C on back seam 12 inches, and up to O 16 inches; next, from H up to K, on Fig. 1, or to where  $2\frac{1}{2}$  inches is marked; on Fig. 2,  $9\frac{1}{2}$  inches, and to O, on Fig. 2, 12 inches; and from same point, over shoulder, to B, on Fig. 2,  $14\frac{3}{4}$ , and to C on 2,  $16\frac{3}{4}$  inches, from same point to J 9 inches, and from same point to P,  $11\frac{1}{2}$  inches; next commence at G and measure up to N 7 inches, and to K  $9\frac{1}{2}$ , and over shoulder to B  $15\frac{1}{2}$ , and to L, on Fig. 2, 11, and to I 15 inches, and next

down to P  $10\frac{1}{2}$  inches ; next, from D to J 7 inches ; next raise the arm up on a level with B on back, and bend the elbow at right angles with back, and measure from B to M  $7\frac{1}{2}$  inches, and to elbow 20, and to hand 32; next measure across breast from arm to arm, or 8 to 8, 16 inches, and round neck 16 inches, over vest collar ; next, round breast 36 inches, and waist 32 inches. Breast and waist measure over vest.

To draught back, draw line on edge of cloth ; then commence at O, and draw line down to E, about two inches in from edge of cloth, or first line at E, and square top of back from O to dot on top of back, then measure down from O to B  $5\frac{1}{2}$ , and to C  $8\frac{1}{2}$ , and to D 17, and E 19 inches, and full length of back 36 inches ; then measure from O to dot  $2\frac{1}{2}$ , and from B to back cye on line B  $7\frac{1}{2}$  inches, and from E width back at waist 2 inches, or as you wish ; next, form the shoulder, top of back, and side seam as represented.

To draught forepart, lay the back on the cloth where it will come out best, then extend line C across by H and G to front of breast, or as far as necessary ; then measure from C to H 12 inches, and to G 16 or 4 inches from H, and to front of breast 20 inches, or 8 inches from H ; next, measure from H under arm and up to O, 16 inches, as taken on the man, measure from H to cye, the width of square as applied in measuring, and square up in front of cye as represented ; then form back part of cye and botton, and up to line 4 ; next measure from H up to K  $9\frac{1}{2}$  inches, and up to A 12 inches ; mark in the same range  $14\frac{3}{4}$  and  $16\frac{3}{4}$  as taken over to B and to C, then sweep from H by K  $9\frac{1}{2}$ , and by 12,  $14\frac{3}{4}$  and  $16\frac{3}{4}$  ; next mark from H to J 9 inches, and to P  $11\frac{1}{2}$  inches ; next, commence at G and measure up to N 7 inches, and to K  $9\frac{1}{2}$ , and over shoulder to B  $15\frac{1}{2}$  inches, and to center of back cye or L,  $11\frac{1}{2}$ , and to I 15 inches, and from same point to J 11 inches, and to P  $10\frac{1}{2}$  inches ; next, sweep from H by J 9 inches, and from G by J 11 inches ; next, from where sweep crosses at J, measure back to D 7 inches ; next, carry the back in at waist letting it turn on the dot at shoulder blade, until the outside of back at D rests on sweep 7 inches from J ; this gives the coat the exact spring at waist ; and while the back is in this position, mark side seam from shoulder blade to bottom of waist, as per dotted lines, hollowing it a little ; then draw line from cye down to waist at J and form bottom of side piece to J ; next,

sweep from H to P  $11\frac{1}{2}$  inches, and from G by P  $10\frac{1}{2}$  inches, and measure from J to P 9 inches, and form waist seam as represented; next, sweep from G by K  $9\frac{1}{2}$ , and by B  $15\frac{1}{2}$  inches, then place the back, the dot, or  $2\frac{1}{2}$  inches from A, on the point where the two sweeps, cross at K from H and G, and the point at B on back seam; on the point where the two sweeps, cross from H to B  $14\frac{1}{2}$ , and G to B  $15\frac{1}{2}$ , and while the back is in this position form the shoulder seam and the remainder of cye, and gorge from A and K to N 16 inches, and allow one inch for making up; then form breast from N to P, the length as taken on the man; also apply waist measure from D to J and to P, and allow 2 inches for making up for fish.

## TO DRAUGHT FROCK COAT SKIRT.

Obtain the pitch of skirt in front by laying the forepart on in a joining position at waist, and drawing a line running in range of front of breast to about 3 inches in from the bottom of skirt in front; also place the side piece in a joining position at waist, and mark the fold in range of side seam to bottom of skirt, then round the fold as per diagram.

To draught sleeve, draw a line on the edge of cloth, or where you wish to take out the sleeve, and square cross top from R to A is one inch, and to S 4 inches or width of cye, then square from S to T, measure from S to T 8 and from D to 8—8 inches or half the size of cye, draw line from 11 by 8, 8 inches from and parallel with front line, or half the size, then form from S the top of sleeve head to 11, then take off width of back and measure to elbow 19 and to hand 32, length of sleeve; add on 2 inches at elbow from 8 to 10, and form sleeve as represented, any width at hand you choose; form under side as represented.



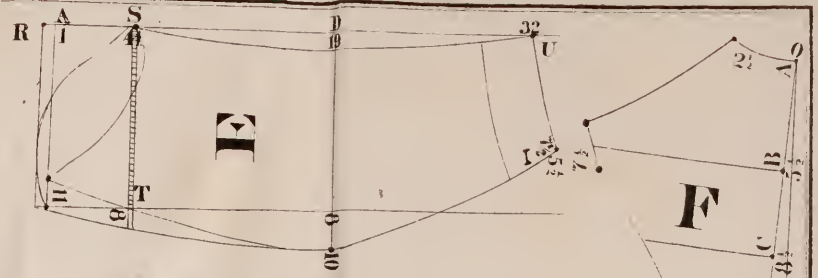
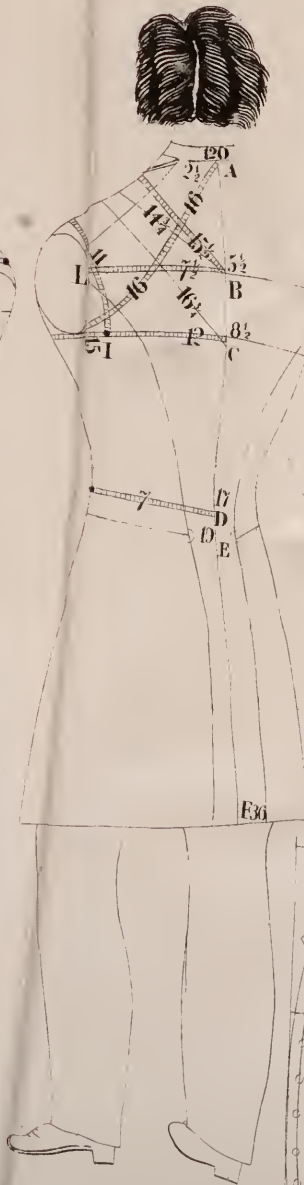
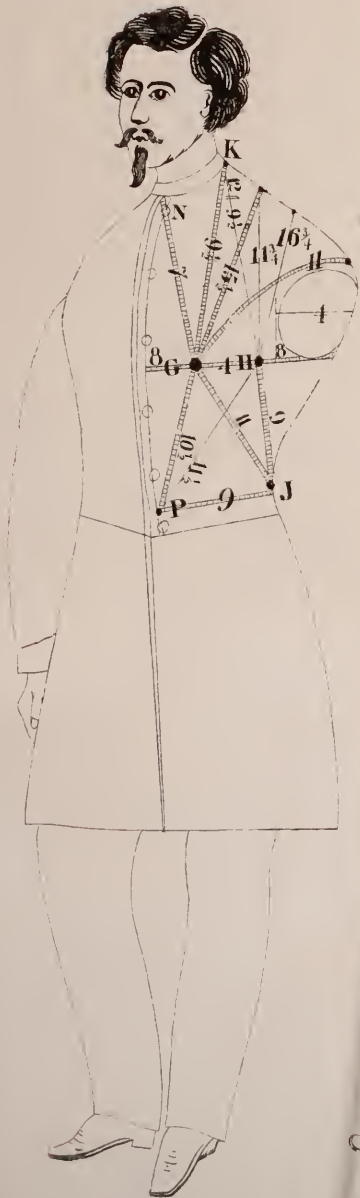




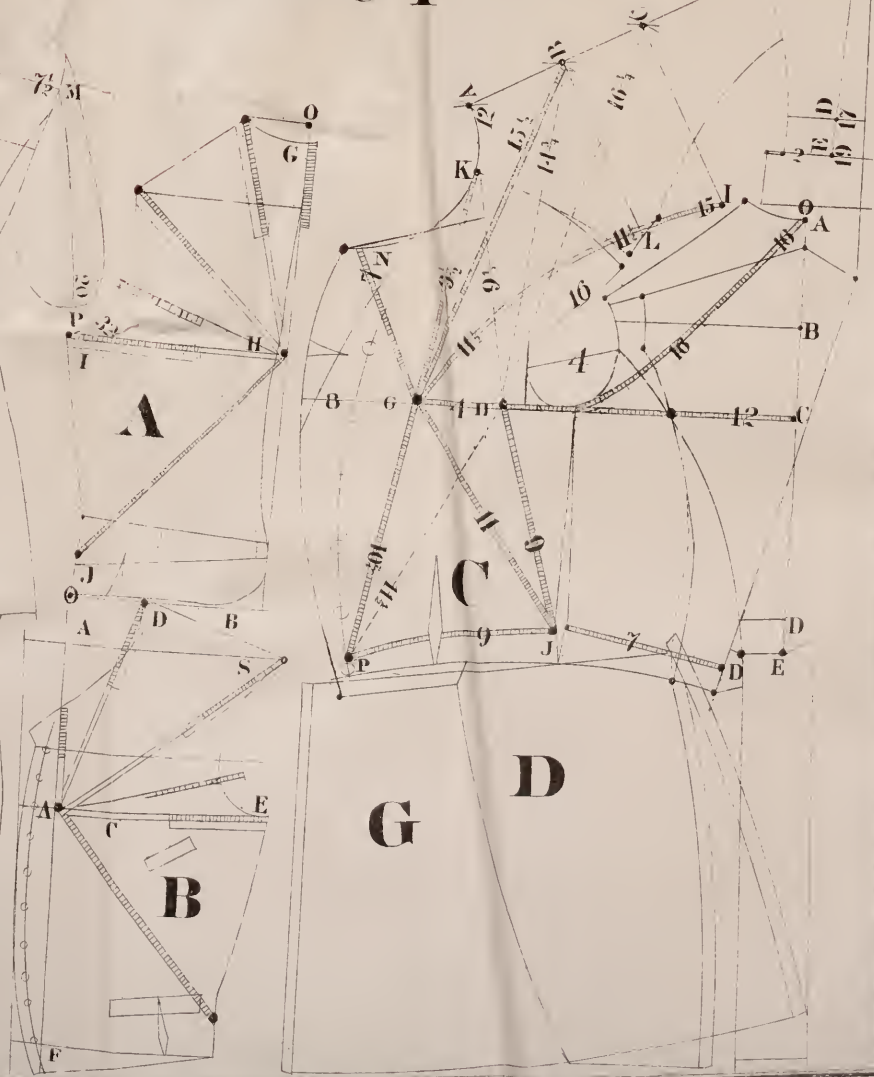
Fig. 1

Copy Right Secord  
Jan. 18. 1869.

Fig. 2



# Plate 1



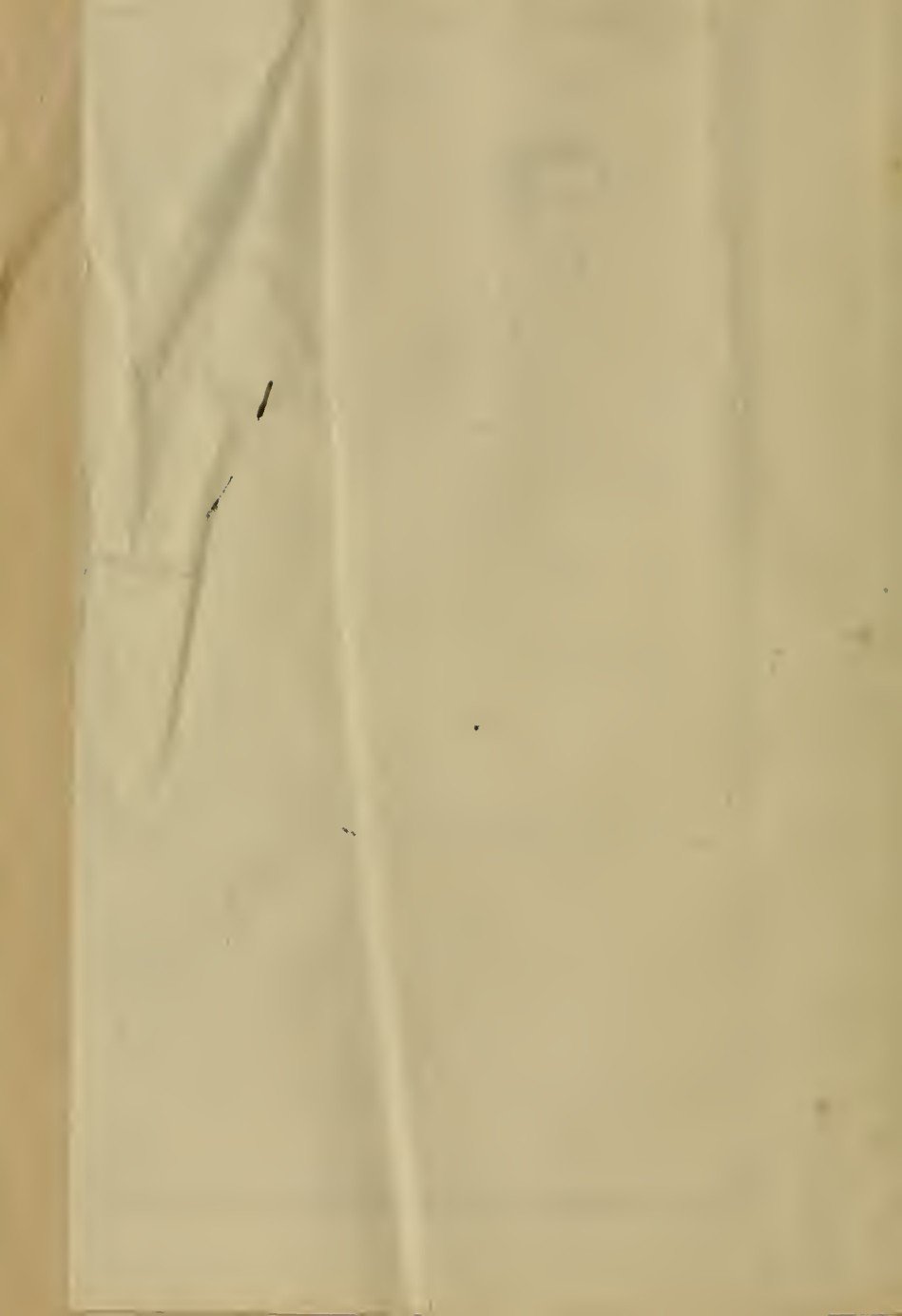


Table of Inches for Draughting Coats by Inch Tape Measure. Plate 1—C D E F and G.

0 Width Back at	Down to Back	Eye	Level under Arm	Natural Waist	Width Back,	Measures taken from H to C.	Up to O.	To K.	To A—top back.	To B.	To C.	From H to J.	From H to P.	From D to J.	Measures taken from G to N.	From G to K.	From G to B.	From G to L.	From J to I.	From G to J.	From G to P.	Cross Breast.	Round Neck.	Width Back.	To Elbow.	To Hand.	Round Waist.
32	5 $\frac{1}{2}$	4 $\frac{1}{2}$	7 $\frac{1}{2}$	16 $\frac{1}{2}$	6 $\frac{1}{2}$	10 $\frac{1}{2}$	15	9	11 $\frac{1}{2}$	13 $\frac{1}{2}$	16	8	10 $\frac{1}{2}$	6	6	9	14	11 $\frac{1}{2}$	14	10	9 $\frac{1}{2}$	15	15	6 $\frac{1}{2}$	18	30	33
33	5 $\frac{1}{2}$	4 $\frac{3}{4}$	7 $\frac{1}{2}$	16 $\frac{3}{4}$	6 $\frac{3}{4}$	10 $\frac{3}{4}$	15 $\frac{1}{2}$	9 $\frac{1}{2}$	11 $\frac{3}{4}$	14	16 $\frac{1}{2}$	8 $\frac{1}{2}$	10 $\frac{3}{4}$	6 $\frac{1}{2}$	6 $\frac{1}{4}$	9 $\frac{1}{4}$	14 $\frac{3}{4}$	11 $\frac{1}{2}$	14 $\frac{1}{2}$	10 $\frac{1}{2}$	9 $\frac{3}{4}$	15 $\frac{1}{4}$	15 $\frac{1}{4}$	6 $\frac{3}{4}$	18 $\frac{1}{2}$	30	33
34	5 $\frac{1}{2}$	5	8	17 $\frac{1}{2}$	7	11 $\frac{1}{2}$	15 $\frac{1}{2}$	9 $\frac{1}{2}$	12	14 $\frac{1}{2}$	16 $\frac{3}{4}$	8 $\frac{1}{2}$	11	6 $\frac{3}{4}$	6 $\frac{3}{2}$	9 $\frac{1}{2}$	15	11 $\frac{1}{2}$	14 $\frac{1}{2}$	10 $\frac{1}{2}$	10 $\frac{1}{2}$	15 $\frac{1}{2}$	15 $\frac{1}{2}$	7	19 $\frac{1}{2}$	31	31
35	5 $\frac{1}{2}$	5 $\frac{1}{4}$	8 $\frac{1}{4}$	17 $\frac{3}{4}$	7 $\frac{1}{4}$	11 $\frac{3}{4}$	15 $\frac{3}{4}$	9 $\frac{3}{4}$	12 $\frac{1}{4}$	14 $\frac{3}{4}$	16 $\frac{3}{4}$	8 $\frac{3}{4}$	11 $\frac{1}{4}$	6 $\frac{3}{4}$	6 $\frac{3}{4}$	9 $\frac{3}{4}$	15 $\frac{3}{4}$	11 $\frac{3}{4}$	14 $\frac{3}{4}$	10 $\frac{3}{4}$	10 $\frac{3}{4}$	15 $\frac{3}{4}$	15 $\frac{3}{4}$	7 $\frac{1}{4}$	20	31 $\frac{1}{2}$	31
36	5 $\frac{1}{2}$	5 $\frac{1}{2}$	8 $\frac{1}{2}$	18	7 $\frac{1}{2}$	12	16	10	12 $\frac{1}{2}$	14 $\frac{1}{2}$	17	9	11 $\frac{1}{2}$	7	7	10	15 $\frac{1}{2}$	12	15	11	10 $\frac{1}{2}$	16	16	7 $\frac{1}{2}$	20	32	32
37	5 $\frac{1}{2}$	5 $\frac{1}{2}$	8 $\frac{3}{8}$	18	7 $\frac{3}{8}$	12 $\frac{1}{4}$	16 $\frac{1}{4}$	10 $\frac{1}{4}$	12 $\frac{3}{4}$	15	17 $\frac{1}{4}$	9 $\frac{1}{4}$	11 $\frac{3}{4}$	7 $\frac{1}{4}$	7	10 $\frac{1}{4}$	15 $\frac{3}{4}$	12	15 $\frac{1}{4}$	11 $\frac{1}{4}$	10 $\frac{3}{4}$	16 $\frac{1}{4}$	16 $\frac{1}{4}$	7 $\frac{3}{4}$	20	32 $\frac{1}{2}$	33
38	5 $\frac{1}{2}$	5 $\frac{3}{4}$	8 $\frac{1}{2}$	18 $\frac{1}{2}$	7 $\frac{1}{2}$	12 $\frac{1}{2}$	16 $\frac{1}{2}$	10 $\frac{1}{2}$	13	15 $\frac{1}{2}$	17 $\frac{1}{2}$	9 $\frac{1}{2}$	12	7 $\frac{1}{2}$	7 $\frac{1}{2}$	10 $\frac{1}{2}$	16	12 $\frac{1}{2}$	15 $\frac{1}{2}$	11 $\frac{1}{2}$	11	16 $\frac{1}{2}$	16 $\frac{1}{2}$	7 $\frac{3}{4}$	20	32	33 $\frac{1}{2}$
39	5 $\frac{1}{2}$	6	8 $\frac{3}{4}$	18 $\frac{3}{4}$	8	12 $\frac{3}{4}$	16 $\frac{3}{4}$	10 $\frac{3}{4}$	13	15 $\frac{3}{4}$	17 $\frac{3}{4}$	9 $\frac{3}{4}$	12	7 $\frac{1}{2}$	7 $\frac{1}{2}$	10 $\frac{3}{4}$	16 $\frac{3}{4}$	12 $\frac{3}{4}$	15 $\frac{3}{4}$	11 $\frac{3}{4}$	11	16 $\frac{3}{4}$	16 $\frac{3}{4}$	8	21	33 $\frac{1}{2}$	34
40	5 $\frac{1}{2}$	6 $\frac{1}{4}$	9	18 $\frac{1}{4}$	8	13	17	10	13 $\frac{1}{4}$	15 $\frac{3}{4}$	18	9 $\frac{1}{2}$	12 $\frac{1}{2}$	7 $\frac{1}{2}$	7 $\frac{1}{2}$	10 $\frac{3}{4}$	16 $\frac{3}{4}$	12 $\frac{3}{4}$	15 $\frac{3}{4}$	11 $\frac{3}{4}$	11	17	17	8	21	33 $\frac{1}{2}$	35
41	5 $\frac{1}{2}$	6 $\frac{1}{2}$	9 $\frac{1}{4}$	19	8 $\frac{1}{4}$	13 $\frac{1}{4}$	17 $\frac{1}{4}$	11	13 $\frac{1}{2}$	16	18 $\frac{1}{4}$	9 $\frac{1}{4}$	12 $\frac{1}{2}$	8	7 $\frac{1}{2}$	11	16 $\frac{3}{4}$	13 $\frac{1}{2}$	16 $\frac{1}{2}$	12	11 $\frac{1}{2}$	17	17	8	21	33 $\frac{1}{2}$	35
42	5 $\frac{1}{2}$	6 $\frac{1}{2}$	9 $\frac{1}{2}$	19	8 $\frac{1}{2}$	13 $\frac{1}{2}$	17 $\frac{1}{2}$	11 $\frac{1}{2}$	13 $\frac{1}{2}$	16 $\frac{1}{2}$	18 $\frac{1}{2}$	9 $\frac{1}{2}$	12 $\frac{1}{2}$	8	7 $\frac{3}{4}$	11 $\frac{1}{4}$	17	13	16 $\frac{1}{2}$	12 $\frac{1}{4}$	11 $\frac{1}{2}$	17 $\frac{1}{4}$	17 $\frac{1}{4}$	8 $\frac{1}{4}$	21 $\frac{1}{2}$	34	36 $\frac{1}{2}$
43	5 $\frac{1}{2}$	6 $\frac{3}{4}$	9 $\frac{3}{4}$	19 $\frac{1}{4}$	8 $\frac{3}{4}$	14	17 $\frac{3}{4}$	11 $\frac{3}{4}$	14	16 $\frac{3}{4}$	18 $\frac{3}{4}$	9 $\frac{3}{4}$	12 $\frac{1}{2}$	8	8	11 $\frac{1}{2}$	17 $\frac{1}{4}$	13 $\frac{1}{4}$	16 $\frac{3}{4}$	12 $\frac{1}{2}$	12	17 $\frac{3}{4}$	17 $\frac{3}{4}$	9	22	35	36 $\frac{1}{2}$
44	5 $\frac{1}{2}$	7	9 $\frac{1}{2}$	19 $\frac{1}{2}$	9	14 $\frac{1}{2}$	18	11 $\frac{1}{2}$	14 $\frac{1}{2}$	16 $\frac{1}{2}$	19	10	13	8 $\frac{1}{2}$	8 $\frac{1}{2}$	11 $\frac{3}{4}$	17 $\frac{1}{2}$	13 $\frac{1}{2}$	17	12 $\frac{3}{4}$	12 $\frac{3}{4}$	18	17 $\frac{1}{2}$	9 $\frac{1}{2}$	22	35	36
45	5 $\frac{1}{2}$	7 $\frac{1}{4}$	10	19 $\frac{1}{4}$	9 $\frac{1}{4}$	14 $\frac{1}{4}$	18 $\frac{1}{4}$	12	14 $\frac{1}{4}$	17	19 $\frac{1}{4}$	10 $\frac{1}{4}$	13 $\frac{1}{4}$	8 $\frac{1}{2}$	8 $\frac{1}{2}$	12	17 $\frac{3}{4}$	13 $\frac{3}{4}$	17 $\frac{1}{2}$	13	12 $\frac{3}{4}$	18	18	9 $\frac{1}{2}$	22	35	36 $\frac{1}{2}$



L. E. COLE'S  
IMPROVED SELF VARYING SYSTEM  
OF  
DRAUGHTING PANTS,

ON NEW PRINCIPLES.  
Copy Right Secured  
Jan. 18, 1859.

---

This system is entirely new with the proprietor, and first published in 1858 and now republished with valuable improvements, and warranted to fit all shapes, either corpulent or regular form, without any variations in draughting; all pants being draughted by this system precisely the same, and nothing would induce him to republish this system at this time but a firm belief that it is not only the best, but the only system ever published founded upon true scientific principles of actual measurement, every part being draughted by its own measure thereby giving to each part the exact quantity of cloth required and in the right place, and no more. The important features of this system differing from all others are the establishment of a base or working line running from the waist to the instep through the centre of the leg, and by working each way from this line at waist, thigh, knee and bottom, giving to each part the number of inches called for and no more. Pants draughted by this system never twist, but always hang perfectly square and can be cut any shape either half and half on each side of base line or top side narrow at any part, as what comes off from top side is added to under side, always allowing one-half the size of leg at any part on each side of base line, as that is the center of both top and under sides, center of instep and center of heel, center of knee, thigh and waist. I think a glance at the principles of this system and its working, is sufficient to convince any practical cut-

ter of its superiority over any and all other systems now in use. Hundreds of testimonials of its superiority could be given from those now using it, but it is deemed unnecessary as the principle fully shows for itself, and feeling the fullest confidence that this system, if once adopted, will never be abandoned, I cheerfully submit it to your inspection and use.

L. E. COLE.

MILWAUKEE, May, 1868.

## TO MEASURE FOR PANTS.

*Plate 2.*

Commence at top of hip bone and measure down to knee, 22 inches, and to bottom 42; next inside leg measure to sole of boot next to boot heel 32 inches, next round waist, hips, seat, thigh, knee, bottom; 28-34-36-21-17-17.

To draught upper side or *diagram A* by this system, first draw line on edge of cloth from O to C at bottom, next measure down from O to B 22 and to C 42, next up to A 32, next draw line from A to D  $2\frac{1}{2}$  inches in from C, next measure in from D to K 17, scale A bottom measure next sweep from K by P to N at knee and from A to H at thigh, and from O to I at waist, next measure in from A to E 21, *scale A*, thigh measure; next draw base line or working line from K by E to J at waist and from this line you work each way by placing the center of draughting scale on this line, the protractor pointing down and mark out each way from waist, thigh, knee and bottom according to the measures taken, as each part is draughted by its own measure, no one measure having anything to do with the other; place the scale on base line at waist and mark each way 14, scale A waist measure, next mark out from E to A 21, scale A thigh measure, and to F 21, scale B, and to G 21, scale A thigh measure, and add the dress to H, then place center of scale at M and mark each way to P and N, scale A knee measure, next from K to L 17, scale B bottom measure, then draw line from F to I and from G to N and L at



bottom, then FORM from I to G and from I to H for dress, and from A to R and from H to N and bottom as represented.

To draught under side or *diagram B*, lay the upper side on the cloth where it will come out best; then extend the base line from J to U, next extend the sweeps from G to S and from J to T at waist, from J to T is one-fourth the size of waist, and V taken out, from G to S is 21, scale C thigh measure, add to under side at N till they will make up the required size, 17 inches, also add from 17 upper side at bottom to 17 under side till they make up 17 inches, the required size as per measure; from J to U is 14, scale A waist measure, *on sweep from F by R*; see diagram A; draw line from U to T, and take out V, and form top as represented; draw line from U to C at fork, next apply hip measure 34, and from 3 to 4, seat measure, 36 inches, then form from U to C and S, and from T to knee and to bottom as represented, dropping the point at SS, about one inch, and stretching the same up as marked on diagram B; also stretching in the curve at G, C on under side has a very beautiful effect in the fit of pants.

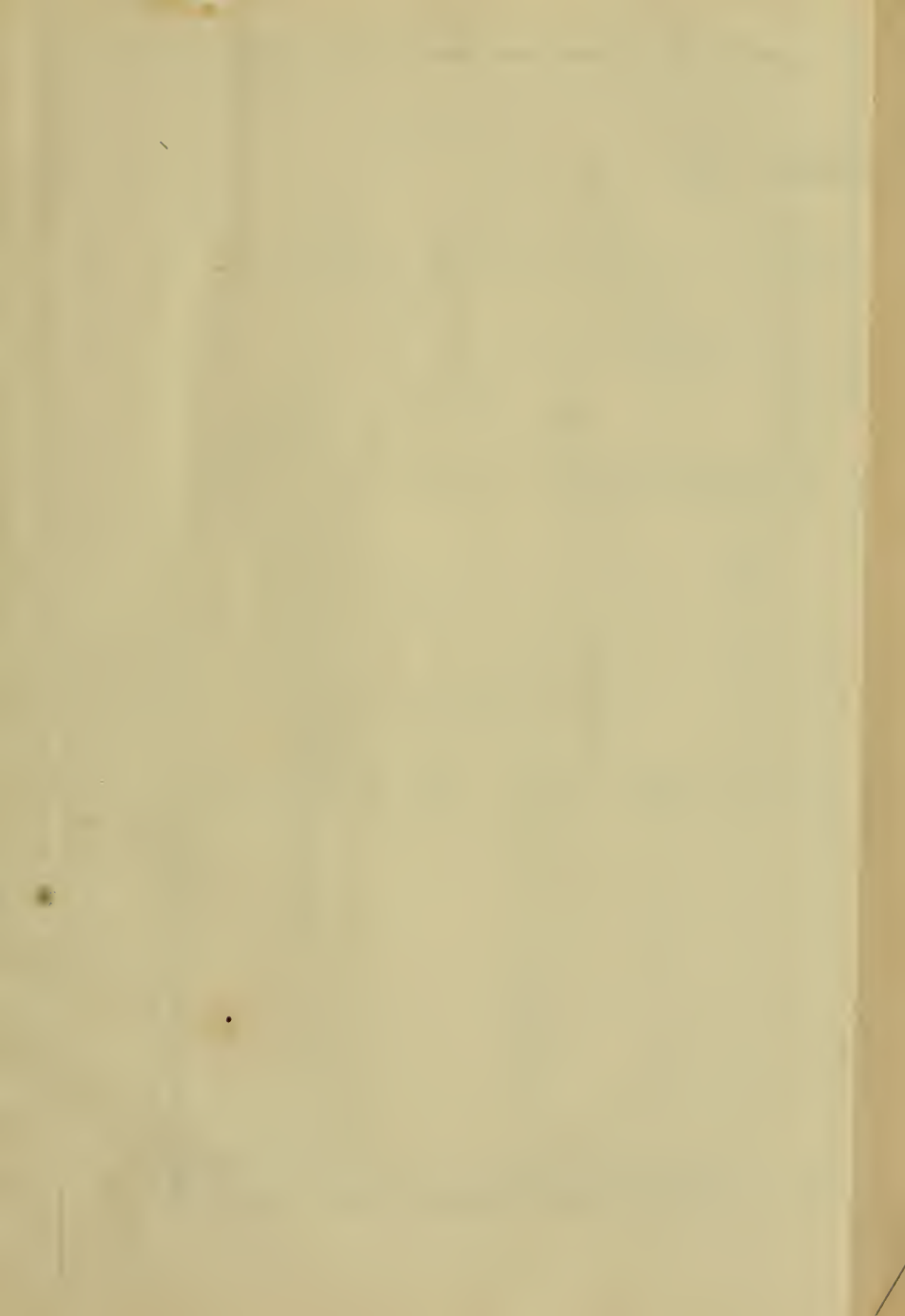
Diagram C is draughted the same as diagram B in all respects, giving to each part the required number of inches called for as taken on the man—it shows the difference between the regular form and the corpulent one. This being the form of the corpulent man, and the distance each way from J to K and J to I being 21 each way, instead of 14 on the regular form at waist, and from 3 to 4, seat measure, 44 instead of 36 on diagram B.

I think this illustration of the different forms, and the different shapes produced, will convince any practical cutter of the true self varying principles of this system over any other system.

Diagrams D and E are on the same principle of draughting, only showing the manner of draughting side band goods, as you cannot hollow the top side at knee, it requires all the hollowing on the underside at the knee, as represented on diagram D.

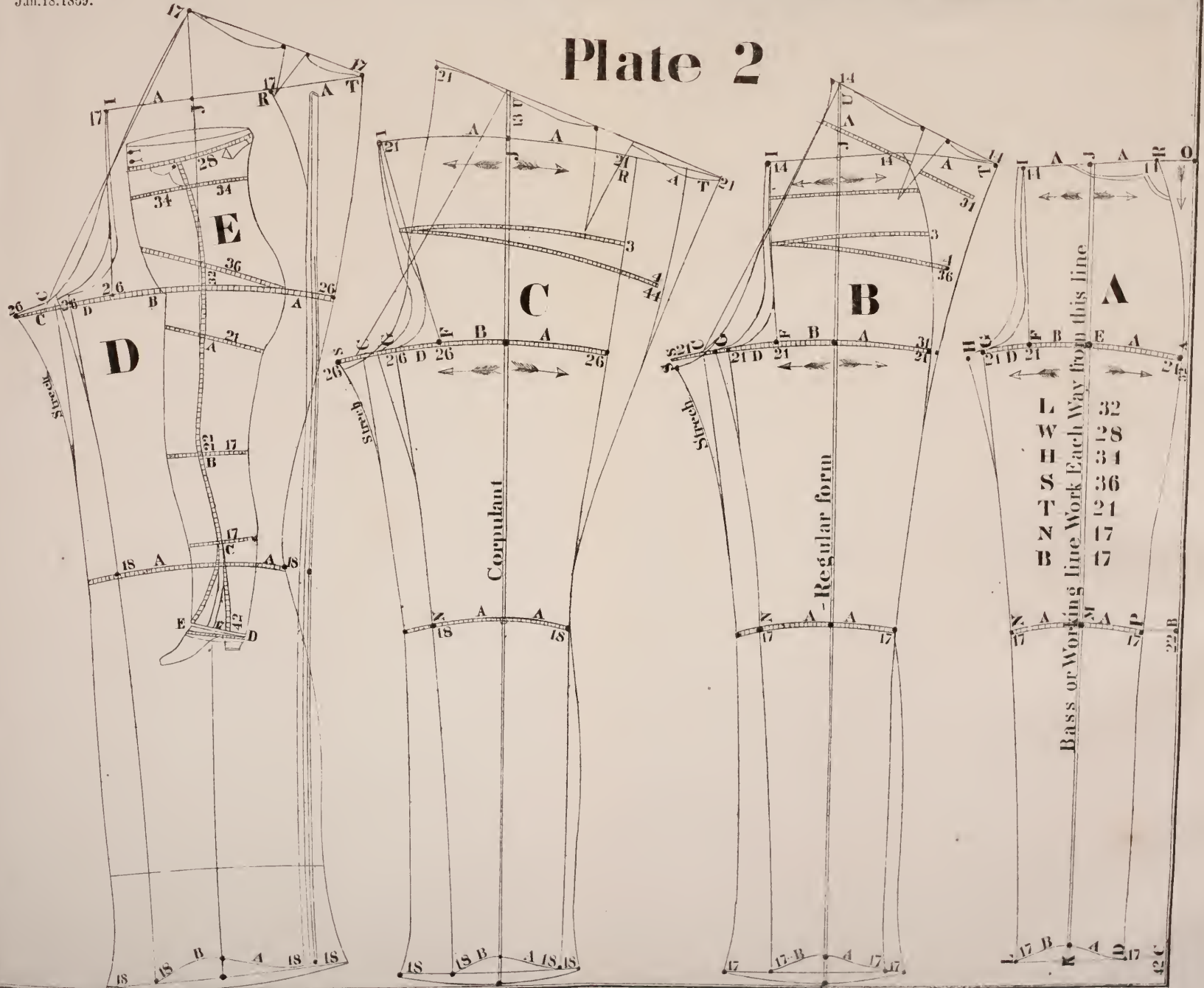
Diagram E shows the manner of taking the measure as applied on diagram A and B.







# Plate 2





# L. E. COLE'S

## IMPROVED

### SYSTEM OF DRAUGHTING COATS,

BY ACTUAL MEASUREMENT.

---

#### TO DRAUGHT SACK COAT AND SHORT BUSINESS FROCK.

*Plate 3.*

This plate contains the draught of Sack Coat in full, also Short Business Frock.

In measuring for Sack Coat you proceed the same as for Frock Coats, on plate 1, figs. 1 and 2, except you will not measure to or mark at J at hip, or at P at front of waist. After marking all the necessary points, you will take your measures as follows: from O to B 5, and to C 8 and to D natural waist 16, and to bottom 30 inches; next place your tape at H, and measure across under arm to C 12 inches, and up to O A 16 inches, next from H to K  $9\frac{1}{2}$ , and to O 12 inches, and over to B  $14\frac{3}{4}$ , and to C  $16\frac{3}{4}$  inches, next commence at G and measure to N 7 and to K  $9\frac{1}{2}$  and to B  $15\frac{1}{2}$  inches from G to center of back eye, to center of back eye  $11\frac{1}{2}$  and to I 15 inches, next place the arm at right angles and measure from B to M  $7\frac{1}{2}$ , and to elbow 20 and to hand 32 inches, next across breast and around neck 16 and 16 inches, next around breast 36 inches.

To draft back, commence at O and measure down to B 5, and to C 8, and to waist 16, and full length 30 inches; width of back at top  $2\frac{1}{2}$  inches; square across at B and C and D and at bottom; next measure out on line B  $7\frac{1}{2}$ , and on line C 6 inches; draw line from 6 to bottom of back parallel with back seam, and from the back as you please.



To draft forepart, place the back on the cloth, and extend line across to front of breast, then measure from C to H 12 inches, and to G 16 or 4 from H and to front of breast, and allow 2 inches from 8 to front; measure back from H to cye 1 inch or width of square, as use in measuring, then square up in front of cye as per diagram; next place tape at H and measure up to K  $9\frac{1}{2}$ , and to O, top back, 12 inches; measure in same range  $14\frac{3}{4}$  and  $16\frac{3}{4}$  inches; then sweep from H by K  $9\frac{1}{2}$ , 12,  $14\frac{3}{4}$  and  $16\frac{3}{4}$  inches; next commence at G and measure up to N 7, and to K  $9\frac{1}{2}$ , and to B  $15\frac{3}{4}$  inches; next from G to L  $11\frac{1}{2}$ , and to I 15 inches; next place the back on point  $2\frac{1}{2}$  inches, touching point where sweep from H and G crosses at K, and point B where sweep from H and G crosses at B on back, then form the shoulder seam, and form gorge from K to N; next from cye and breast add on about two inches at bottom of forepart at back, and draw line from line D to bottom, and shape side seam as per diagram.

To draught sleeve, from O to I is 1 inch, and to 4 is 4 inches, or width of cye; from 4 to 15 is 15 inches or size of cye; draw line 15 to bottom of sleeve parallel with front line; allow about 2 inches at 19; place the back at top of sleeve, and measure from outside of back to elbow at 19, and to 31 length of sleeve 31 inches, and form sleeve as represented.

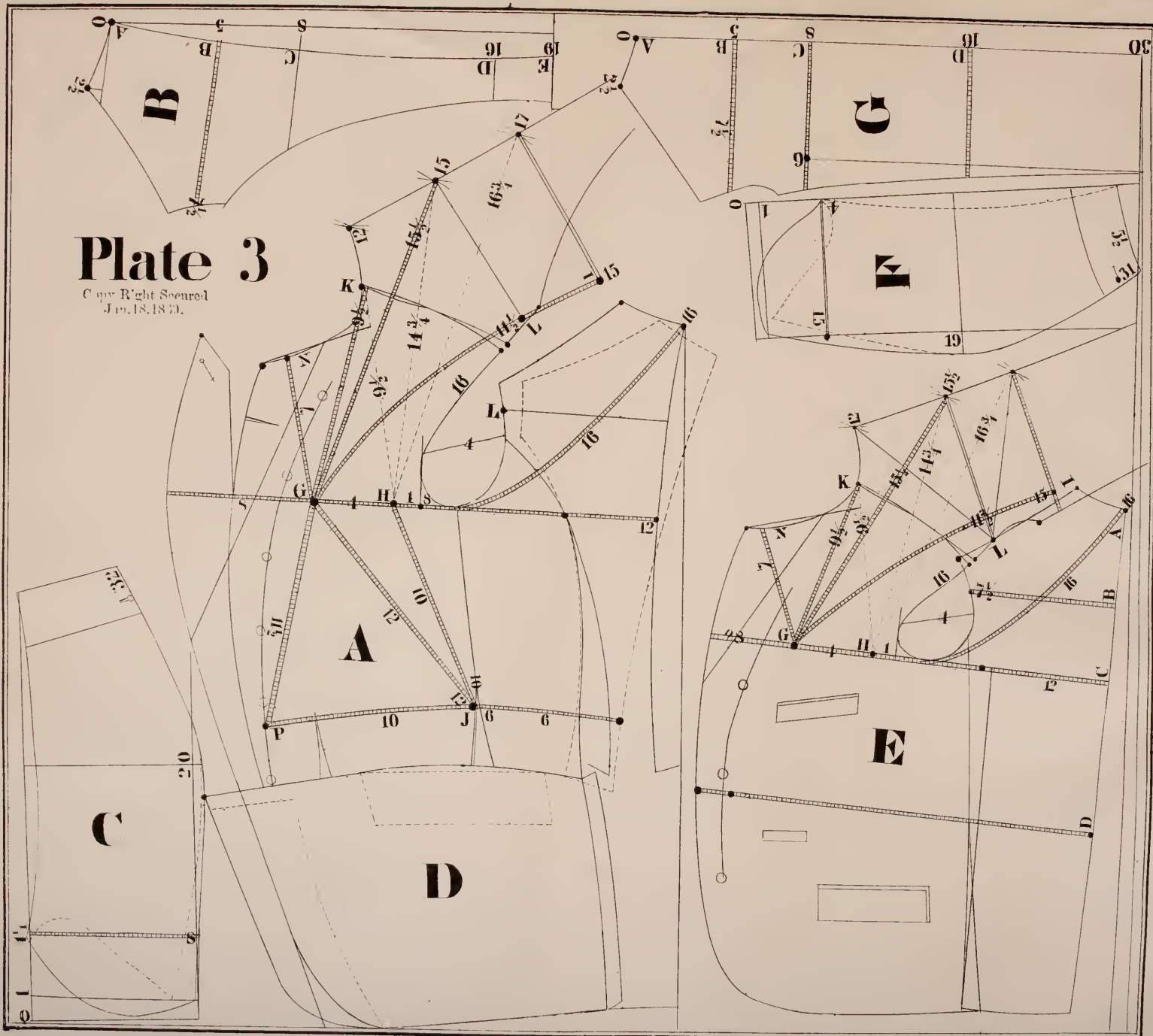
Diagram A, B, C, D, are draughted the same in all respects as frock coat on Plate 1.





# Plate 3

Copyright Secured  
Jan. 18, 1892.





## TO DRAUGHT OVER COAT AND CAPE.

*Plate 4.*

To draught this over-coat and cape, you will proceed in all respects the same as in draughting sack under coat, on plate 3, except you will add to all the measure taken from O, E and F, as follows: from O to B 1 inch, and from E to B 1 inch, and from E to O at top of back, and to H, A, B, each 1 inch, as you will see the allowance is made already in the draught, and marked in figures on the lines, as from E to B  $13\frac{1}{2}$  instead of  $12\frac{1}{2}$  as taken on the man; also from E to H, A and B  $13\frac{1}{2}$ ,  $15\frac{3}{4}$ , and 18, instead of  $12\frac{1}{2}$ ,  $14\frac{1}{4}$ , and 17, as taken on the man; also allow 2 inches across breast in forming all parts. See diagrams A, B and C.

This diagram shows a very good way of cutting a first rate fitting cape by the gorge of coat with the back in a joining position.

## TO MEASURE FOR VEST.

*With Delineator.*

Take the length from socket bone at neck over shoulder and down to hip and in front, then round the breast, waist and neck, also the height of roll. This vest is draughted by a delineator made for the purpose, and warranted good. In draughting vest, proceed as follows: Draw line on edge of cloth, then draw 2d line 2 inches inside and parallel with the first and square the top, then take the delineator and place the edge of same on inside line and let the figures 36 rest on the top line; then mark along in the different spaces and along the bottom of delineator, and then mark at 36 in each space and on the front and bottom, then form the vest from point to point marking from one point to the other by the marks made at the figures 36, or any other size you wish to draught as the figures in the space all indicate the different breast measures and are all applied as above.

The back is draughted the same way by placing the delineator on line O fig. 36, at top resting on top line, then mark in all the spaces as in draughting forepart then forming from one point to the other.

This delineator cuts a beautiful fitting vest and cannot be beat.

## TO DRAUGHT SHIRT.

*Plate 4.*

Diagrams A, B and C of shirt draught, shows a plan of draughting a shirt; and I guarantee it to be one of the best fitting shirts ever got up in this country. It is all right.

The measures for shirt are taken as follows: first measure from O length of shirt, next length of sleeve from Socket bone at O, letting the arm hang down, measure from O over the shoulder down to hand, say 32, and full length of wrist band 34; next round neck 16, and breast 38 for this draught. This draught is 38 breast.

To draught the back, commence at O, from O down to 1 is 1 inch; to 2 is  $3\frac{1}{4}$ , to 3,  $8\frac{1}{4}$ ; to 4,  $11\frac{1}{2}$ ; to 5,  $20\frac{1}{2}$ ; to 6, 31; and to A, 35 inches. Square out from line O at 2, 3, 4, 5, 6 and A; next mark out on top from O to T  $2\frac{1}{2}$  inches; next out on line 2,  $9\frac{3}{4}$ ; on 3,  $9\frac{1}{2}$ ; on 4, 12; on 5, 10; on 6,  $12\frac{1}{2}$ ; form bottom of back from A to  $12\frac{1}{2}$ ; where shirt is left open at bottom, draw line from T to  $9\frac{3}{4}$  to  $9\frac{1}{2}$  and to C, and from 12 by 10 to  $12\frac{1}{2}$  as represented.

To draught front of shirt, commence at O; measure down 2,  $3\frac{1}{2}$ ,  $7\frac{1}{2}$ ,  $10\frac{1}{2}$ ,  $19\frac{1}{2}$ , 30 and 34 inches; then square out from 1, 2, 3, 4, 5 and B; next measure in from O  $3\frac{1}{2}$ ; at 2,  $2\frac{1}{2}$ ; and on line 2,  $9\frac{1}{2}$ ; line 3, 12; line 4,  $12\frac{1}{2}$ ; line 5,  $12\frac{1}{2}$ ; and form line B as you see to  $12\frac{1}{2}$ ; draw line from A to D, and form from D by  $9\frac{1}{2}$  to C, and from C by  $12\frac{1}{2}$  to  $12\frac{1}{2}$  at bottom as represented; next cut a piece the shape of a yoke, and place on as you see, covering shoulder seam, to be stitched on same as yoke.

Diagram C or sleeve: commence at O, measure down on O line  $2\frac{1}{2}$ ,  $11\frac{1}{2}$  and 22; square out O line, and at 1, 2, and at hand 6 inches; then form sleeve as per diagram. Make cuff any width or size you wish.







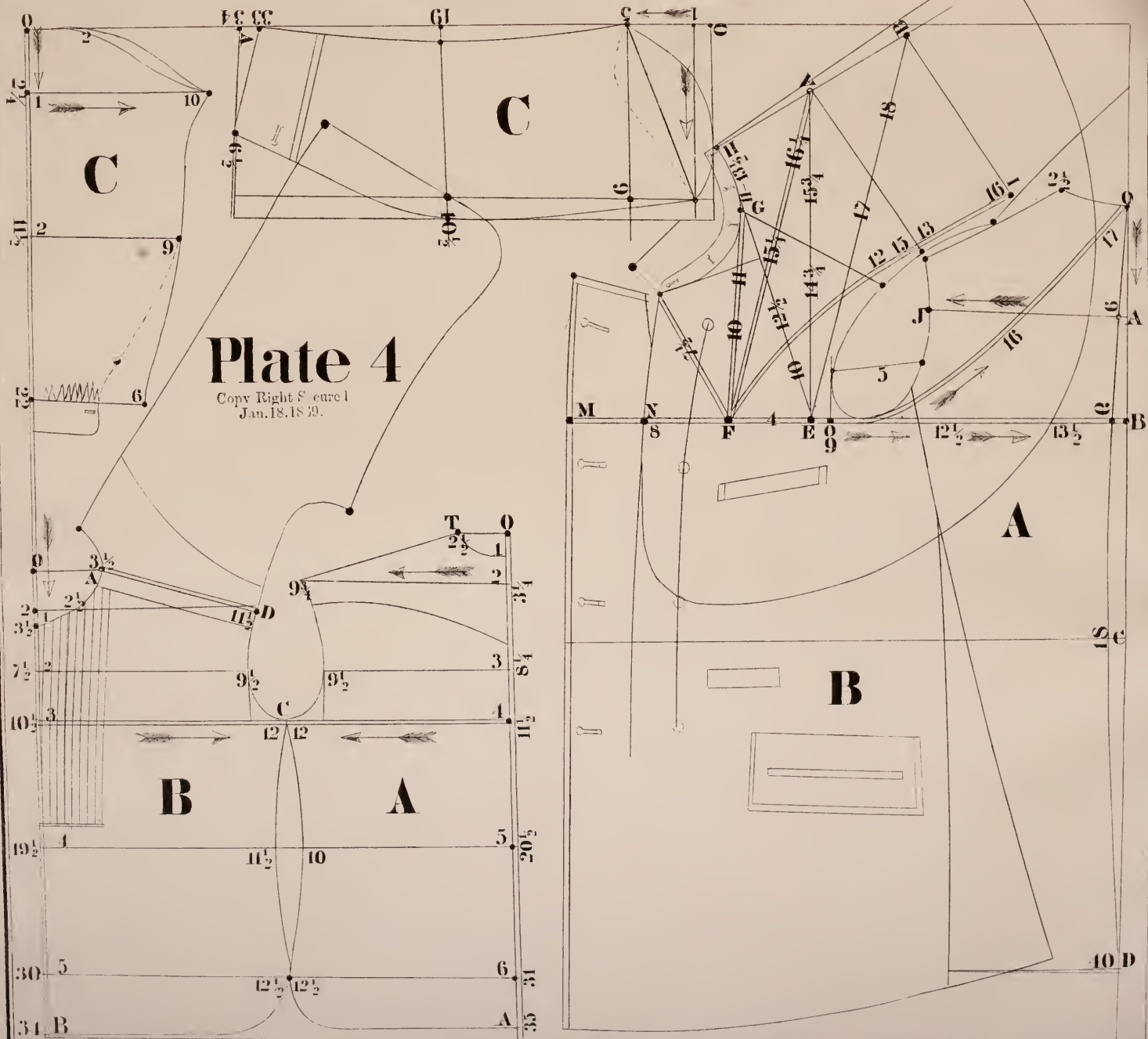




Table of Inches for Draughting Shirts by Inch Tape Measure, on Plate 4—A B and C.

To Draught Shirt	Back as follows:	Commence at O.	From 0 down to I.	To 2 do.	To 3 do.	To 4 do.	To 5 do.	To 6 do.	To A.	From 0 Cross to I.	From 2 do.	From 3 do.	From 4 do.	From 5 do.	From 6 do.	From 0 down to I.	To 2 do.	To 3 do.	To 4 do.	To 5 do.	To B do.	From 0 Cross to A.	From 1 do.	From 2 Cross.	From 3 do.	From 4 do.	From 5 do.	From 0 down to I.	To 2 do.	To 3 do.	Cross from 0 to 2	From 1 Cross.	From 2 do.	From 3 do.		
32	0	$\frac{1}{2}$	$\frac{27}{8}$	$\frac{67}{8}$	$\frac{91}{8}$	$\frac{181}{8}$	$\frac{283}{8}$	$\frac{383}{8}$	$\frac{17}{8}$	9	$\frac{87}{8}$	$\frac{103}{8}$	$\frac{101}{8}$	$\frac{101}{8}$	$\frac{111}{8}$	$\frac{27}{8}$	1	$\frac{101}{8}$	$\frac{203}{8}$	$\frac{27}{8}$	$\frac{283}{8}$	$\frac{323}{8}$	$\frac{27}{8}$	$\frac{87}{8}$	$\frac{73}{8}$	$\frac{43}{8}$	$\frac{27}{8}$	$\frac{67}{8}$	$\frac{91}{8}$	$\frac{181}{8}$	$\frac{283}{8}$	$\frac{383}{8}$	$\frac{17}{8}$	$\frac{87}{8}$	$\frac{73}{8}$	$\frac{43}{8}$
33	0	$\frac{3}{4}$	$\frac{27}{4}$	$\frac{72}{4}$	$\frac{112}{4}$	$\frac{152}{4}$	$\frac{192}{4}$	$\frac{232}{4}$	2	$\frac{91}{4}$	11	$\frac{103}{4}$	$\frac{111}{4}$	$\frac{111}{4}$	$\frac{111}{4}$	3	$\frac{101}{4}$	$\frac{203}{4}$	$\frac{27}{4}$	$\frac{283}{4}$	$\frac{323}{4}$	$\frac{27}{4}$	$\frac{87}{4}$	$\frac{73}{4}$	$\frac{43}{4}$	$\frac{27}{4}$	$\frac{67}{4}$	$\frac{91}{4}$	$\frac{181}{4}$	$\frac{283}{4}$	$\frac{383}{4}$	$\frac{17}{4}$	$\frac{87}{4}$	$\frac{73}{4}$	$\frac{43}{4}$	
34	0	$\frac{5}{8}$	$\frac{37}{8}$	$\frac{72}{8}$	$\frac{112}{8}$	$\frac{152}{8}$	$\frac{192}{8}$	$\frac{232}{8}$	$\frac{21}{8}$	$\frac{91}{8}$	$\frac{91}{8}$	$\frac{111}{8}$	$\frac{111}{8}$	$\frac{111}{8}$	$\frac{111}{8}$	$\frac{31}{8}$	$\frac{101}{8}$	$\frac{203}{8}$	$\frac{27}{8}$	$\frac{283}{8}$	$\frac{323}{8}$	$\frac{27}{8}$	$\frac{87}{8}$	$\frac{73}{8}$	$\frac{43}{8}$	$\frac{27}{8}$	$\frac{67}{8}$	$\frac{91}{8}$	$\frac{181}{8}$	$\frac{283}{8}$	$\frac{383}{8}$	$\frac{17}{8}$	$\frac{87}{8}$	$\frac{73}{8}$	$\frac{43}{8}$	
35	0	$\frac{3}{2}$	$\frac{37}{2}$	$\frac{72}{2}$	$\frac{112}{2}$	$\frac{152}{2}$	$\frac{192}{2}$	$\frac{232}{2}$	$\frac{21}{2}$	$\frac{91}{2}$	$\frac{91}{2}$	$\frac{111}{2}$	$\frac{111}{2}$	$\frac{111}{2}$	$\frac{111}{2}$	$\frac{31}{2}$	$\frac{101}{2}$	$\frac{203}{2}$	$\frac{27}{2}$	$\frac{283}{2}$	$\frac{323}{2}$	$\frac{27}{2}$	$\frac{87}{2}$	$\frac{73}{2}$	$\frac{43}{2}$	$\frac{27}{2}$	$\frac{67}{2}$	$\frac{91}{2}$	$\frac{181}{2}$	$\frac{283}{2}$	$\frac{383}{2}$	$\frac{17}{2}$	$\frac{87}{2}$	$\frac{73}{2}$	$\frac{43}{2}$	
36	0	$\frac{7}{8}$	$\frac{37}{8}$	$\frac{72}{8}$	$\frac{112}{8}$	$\frac{152}{8}$	$\frac{192}{8}$	$\frac{232}{8}$	$\frac{21}{8}$	$\frac{91}{8}$	$\frac{91}{8}$	$\frac{111}{8}$	$\frac{111}{8}$	$\frac{111}{8}$	$\frac{111}{8}$	$\frac{31}{8}$	$\frac{101}{8}$	$\frac{203}{8}$	$\frac{27}{8}$	$\frac{283}{8}$	$\frac{323}{8}$	$\frac{27}{8}$	$\frac{87}{8}$	$\frac{73}{8}$	$\frac{43}{8}$	$\frac{27}{8}$	$\frac{67}{8}$	$\frac{91}{8}$	$\frac{181}{8}$	$\frac{283}{8}$	$\frac{383}{8}$	$\frac{17}{8}$	$\frac{87}{8}$	$\frac{73}{8}$	$\frac{43}{8}$	
37	0	1	$\frac{37}{4}$	$\frac{72}{4}$	$\frac{112}{4}$	$\frac{152}{4}$	$\frac{192}{4}$	$\frac{232}{4}$	35	$\frac{91}{4}$	$\frac{91}{4}$	$\frac{111}{4}$	$\frac{111}{4}$	$\frac{111}{4}$	$\frac{111}{4}$	$\frac{31}{4}$	$\frac{101}{4}$	$\frac{203}{4}$	$\frac{27}{4}$	$\frac{283}{4}$	$\frac{323}{4}$	$\frac{27}{4}$	$\frac{87}{4}$	$\frac{73}{4}$	$\frac{43}{4}$	$\frac{27}{4}$	$\frac{67}{4}$	$\frac{91}{4}$	$\frac{181}{4}$	$\frac{283}{4}$	$\frac{383}{4}$	$\frac{17}{4}$	$\frac{87}{4}$	$\frac{73}{4}$	$\frac{43}{4}$	
38	$\frac{1}{16}$	$\frac{33}{16}$	$\frac{33}{16}$	$\frac{82}{16}$	$\frac{112}{16}$	$\frac{152}{16}$	$\frac{192}{16}$	$\frac{232}{16}$	$\frac{351}{16}$	$\frac{23}{16}$	$\frac{91}{16}$	$\frac{91}{16}$	$\frac{111}{16}$	$\frac{111}{16}$	$\frac{111}{16}$	$\frac{31}{16}$	$\frac{101}{16}$	$\frac{203}{16}$	$\frac{27}{16}$	$\frac{283}{16}$	$\frac{323}{16}$	$\frac{27}{16}$	$\frac{87}{16}$	$\frac{73}{16}$	$\frac{43}{16}$	$\frac{27}{16}$	$\frac{67}{16}$	$\frac{91}{16}$	$\frac{181}{16}$	$\frac{283}{16}$	$\frac{383}{16}$	$\frac{17}{16}$	$\frac{87}{16}$	$\frac{73}{16}$	$\frac{43}{16}$	
39	$\frac{1}{4}$	$\frac{31}{4}$	$\frac{31}{4}$	$\frac{81}{4}$	$\frac{112}{4}$	$\frac{152}{4}$	$\frac{192}{4}$	$\frac{232}{4}$	$\frac{351}{4}$	$\frac{27}{4}$	10	$\frac{91}{4}$	$\frac{121}{4}$	$\frac{121}{4}$	13	$\frac{31}{4}$	$\frac{101}{4}$	$\frac{203}{4}$	$\frac{27}{4}$	$\frac{283}{4}$	$\frac{323}{4}$	$\frac{27}{4}$	$\frac{87}{4}$	$\frac{73}{4}$	$\frac{43}{4}$	$\frac{27}{4}$	$\frac{67}{4}$	$\frac{91}{4}$	$\frac{181}{4}$	$\frac{283}{4}$	$\frac{383}{4}$	$\frac{17}{4}$	$\frac{87}{4}$	$\frac{73}{4}$	$\frac{43}{4}$	
40	$\frac{1}{2}$	$\frac{31}{2}$	$\frac{31}{2}$	$\frac{81}{2}$	$\frac{112}{2}$	$\frac{152}{2}$	$\frac{192}{2}$	$\frac{232}{2}$	$\frac{351}{2}$	$\frac{27}{2}$	10	$\frac{91}{2}$	$\frac{121}{2}$	$\frac{121}{2}$	13	$\frac{31}{2}$	$\frac{101}{2}$	$\frac{203}{2}$	$\frac{27}{2}$	$\frac{283}{2}$	$\frac{323}{2}$	$\frac{27}{2}$	$\frac{87}{2}$	$\frac{73}{2}$	$\frac{43}{2}$	$\frac{27}{2}$	$\frac{67}{2}$	$\frac{91}{2}$	$\frac{181}{2}$	$\frac{283}{2}$	$\frac{383}{2}$	$\frac{17}{2}$	$\frac{87}{2}$	$\frac{73}{2}$	$\frac{43}{2}$	
41	$\frac{3}{4}$	$\frac{31}{4}$	$\frac{31}{4}$	$\frac{81}{4}$	$\frac{112}{4}$	$\frac{152}{4}$	$\frac{192}{4}$	$\frac{232}{4}$	35	$\frac{91}{4}$	$\frac{91}{4}$	$\frac{111}{4}$	$\frac{111}{4}$	$\frac{111}{4}$	$\frac{111}{4}$	$\frac{31}{4}$	$\frac{101}{4}$	$\frac{203}{4}$	$\frac{27}{4}$	$\frac{283}{4}$	$\frac{323}{4}$	$\frac{27}{4}$	$\frac{87}{4}$	$\frac{73}{4}$	$\frac{43}{4}$	$\frac{27}{4}$	$\frac{67}{4}$	$\frac{91}{4}$	$\frac{181}{4}$	$\frac{283}{4}$	$\frac{383}{4}$	$\frac{17}{4}$	$\frac{87}{4}$	$\frac{73}{4}$	$\frac{43}{4}$	
42	$\frac{1}{8}$	$\frac{37}{8}$	$\frac{37}{8}$	$\frac{87}{8}$	$\frac{112}{8}$	$\frac{152}{8}$	$\frac{192}{8}$	$\frac{232}{8}$	$\frac{361}{8}$	$\frac{23}{8}$	$\frac{91}{8}$	$\frac{91}{8}$	$\frac{111}{8}$	$\frac{111}{8}$	$\frac{111}{8}$	$\frac{31}{8}$	$\frac{101}{8}$	$\frac{203}{8}$	$\frac{27}{8}$	$\frac{283}{8}$	$\frac{323}{8}$	$\frac{27}{8}$	$\frac{87}{8}$	$\frac{73}{8}$	$\frac{43}{8}$	$\frac{27}{8}$	$\frac{67}{8}$	$\frac{91}{8}$	$\frac{181}{8}$	$\frac{283}{8}$	$\frac{383}{8}$	$\frac{17}{8}$	$\frac{87}{8}$	$\frac{73}{8}$	$\frac{43}{8}$	
43	$\frac{1}{4}$	$\frac{37}{4}$	$\frac{37}{4}$	$\frac{87}{4}$	$\frac{112}{4}$	$\frac{152}{4}$	$\frac{192}{4}$	$\frac{232}{4}$	$\frac{361}{4}$	$\frac{27}{4}$	10	$\frac{91}{4}$	$\frac{121}{4}$	$\frac{121}{4}$	14	$\frac{31}{4}$	$\frac{101}{4}$	$\frac{203}{4}$	$\frac{27}{4}$	$\frac{283}{4}$	$\frac{323}{4}$	$\frac{27}{4}$	$\frac{87}{4}$	$\frac{73}{4}$	$\frac{43}{4}$	$\frac{27}{4}$	$\frac{67}{4}$	$\frac{91}{4}$	$\frac{181}{4}$	$\frac{283}{4}$	$\frac{383}{4}$	$\frac{17}{4}$	$\frac{87}{4}$	$\frac{73}{4}$	$\frac{43}{4}$	
44	$\frac{1}{2}$	$\frac{37}{2}$	$\frac{37}{2}$	$\frac{87}{2}$	$\frac{112}{2}$	$\frac{152}{2}$	$\frac{192}{2}$	$\frac{232}{2}$	$\frac{361}{2}$	$\frac{27}{2}$	10	$\frac{91}{2}$	$\frac{121}{2}$	$\frac{121}{2}$	14	$\frac{31}{2}$	$\frac{101}{2}$	$\frac{203}{2}$	$\frac{27}{2}$	$\frac{283}{2}$	$\frac{323}{2}$	$\frac{27}{2}$	$\frac{87}{2}$	$\frac{73}{2}$	$\frac{43}{2}$	$\frac{27}{2}$	$\frac{67}{2}$	$\frac{91}{2}$	$\frac{181}{2}$	$\frac{283}{2}$	$\frac{383}{2}$	$\frac{17}{2}$	$\frac{87}{2}$	$\frac{73}{2}$	$\frac{43}{2}$	
45	$\frac{3}{4}$	$\frac{37}{4}$	$\frac{37}{4}$	$\frac{87}{4}$	$\frac{112}{4}$	$\frac{152}{4}$	$\frac{192}{4}$	$\frac{232}{4}$	37	$\frac{91}{4}$	$\frac{91}{4}$	$\frac{111}{4}$	$\frac{111}{4}$	$\frac{111}{4}$	$\frac{111}{4}$	$\frac{31}{4}$	$\frac{101}{4}$	$\frac{203}{4}$	$\frac{27}{4}$	$\frac{283}{4}$	$\frac{323}{4}$	$\frac{27}{4}$	$\frac{87}{4}$	$\frac{73}{4}$	$\frac{43}{4}$	$\frac{27}{4}$	$\frac{67}{4}$	$\frac{91}{4}$	$\frac{181}{4}$	$\frac{283}{4}$	$\frac{383}{4}$	$\frac{17}{4}$	$\frac{87}{4}$	$\frac{73}{4}$	$\frac{43}{4}$	

SHIRT SLEEVES

SHIRT FRONT



THE  
TAILORS' GUIDE:

CONTAINING

SYSTEMS OF DRAUGHTING

FROCK AND SACK COATS, PANTS,

VESTS AND SHIRTS,

WITH VALUABLE IMPROVEMENTS, WARRANTED SUPERIOR  
TO ANYTHING EVER OFFERED TO THE TRADE.

---

BY

L. E. COLE,

Practical Cutter for the past 30 years.

---

Copy Right Secured  
Jan. 18. 1869.

MILWAUKEE:

STARR & SON, BOOK AND JOB PRINTERS, 412 AND 414 EAST WATER STREET.

1868.





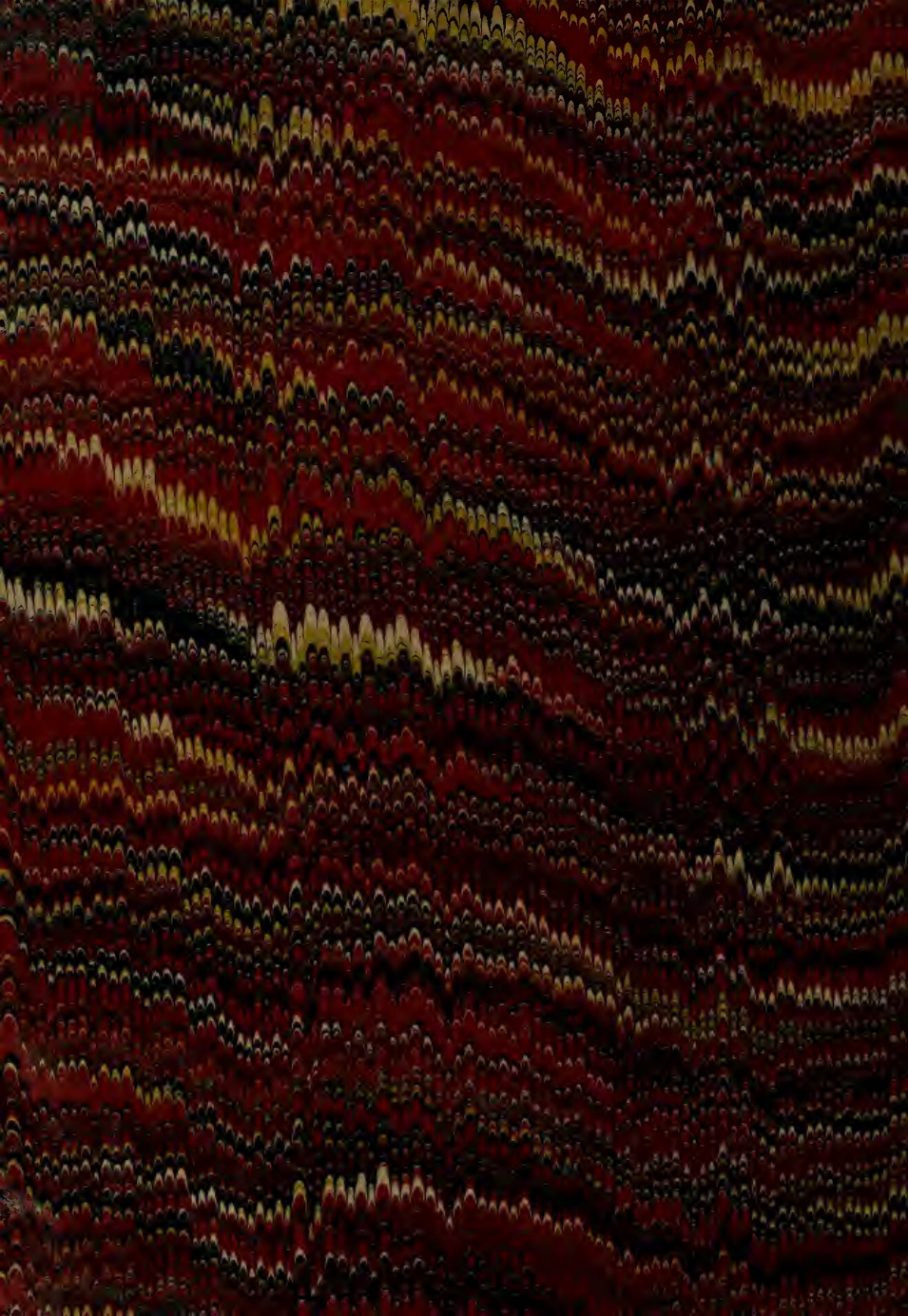




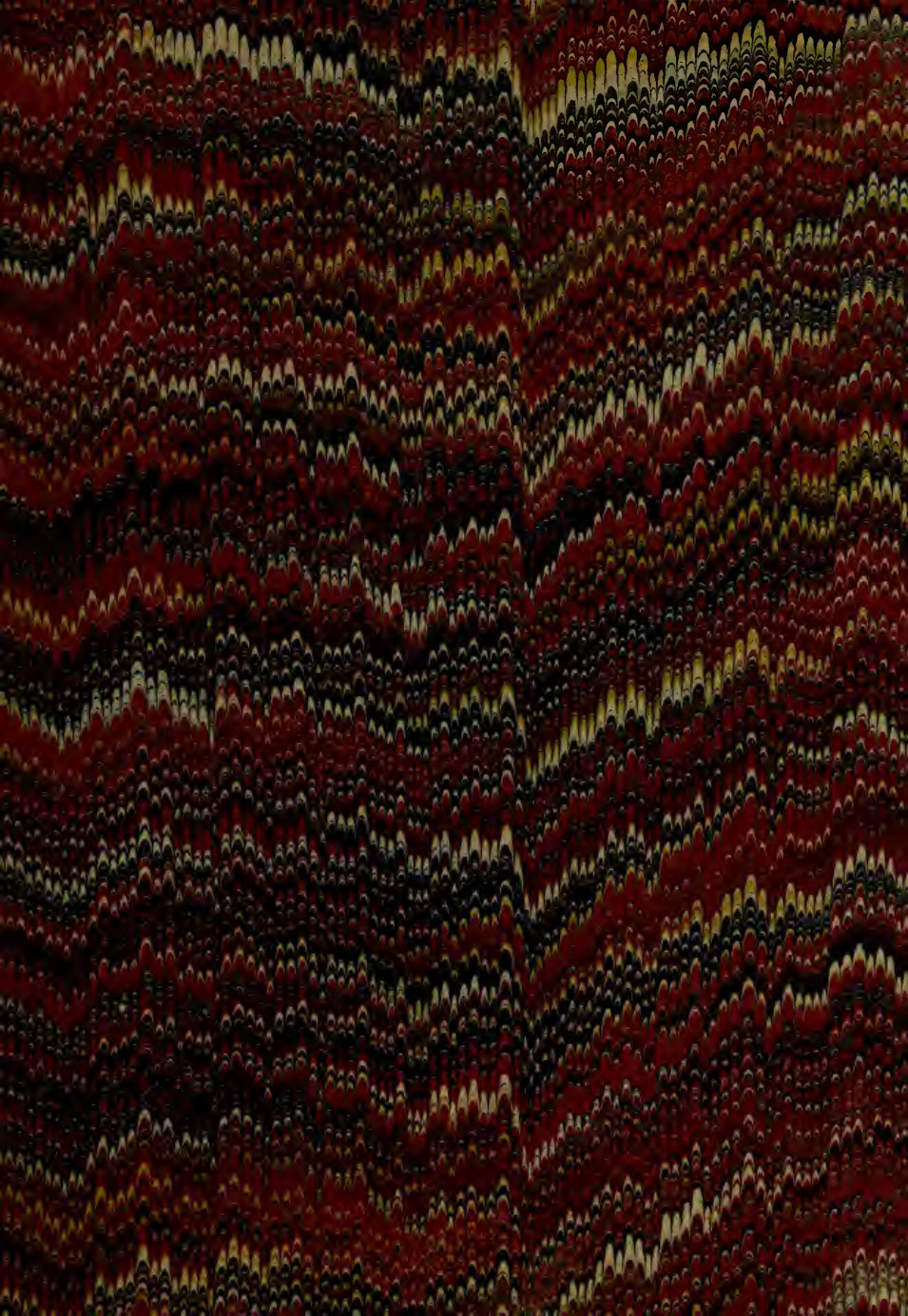












LIBRARY OF CONGRESS



0 014 082 793 9

